



#### Features:

- Compliant to AS1670.2015
- Red Sheath for Fire Alarm Application
- Twisted & Screened. Ideal for VESDANet and other communications loops.
- "EasyTear" outer sheath
- Easy to strip and terminate
- AS/ACIF S008 compliant
- Metre markings
- 200m & 500m Rolls
- PVC Best Practice Certified

#### Standards:

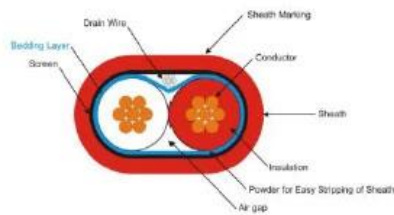
<b>Conductors:</b>	AS/NZS 1125
<b>Insulation:</b>	AS/NZS 3808
<b>Sheath:</b>	AS/NZS 3808
<b>Cable:</b>	AS/ACIF S008
<b>ACMA Supplier Code No:</b>	N 24281

#### Ordering Information:



#### Construction:

<b>Conductors:</b>	Stranded Annealed Copper
<b>Insulation:</b>	PVC V-90
<b>Insulation Color:</b>	Red, White
<b>Sheath:</b>	PVC V-90 Easytear
<b>Sheath Color:</b>	Red
<b>Voltage Rating:</b>	250/250V (Not suitable for Mains Supply)



## Product characteristics:

Flame retardant, Fire resistance, UV resistance, RoHS compliant

## Product application:

Suitable for cabling from the fire alarm, OWS and EWIS panels to detectors, speakers, horns, strobes, field modules, etc. The cable are double insulated and have an "easy tear" outer sheath making the cable easy to strip and terminated.

This 2 core twisted screened version is ideal for VESDA networks and other communication networks.

No. of Cores	Cross Section	Conductor	Core Lay Up	Lengths	Insulation/Sheath	Overall Size
	(mm <sup>2</sup> )	No./Dia			Thickness	
2	1.50	7 / 0.52	Twisted	200/500	0.6 / 0.9	7.5 x 5.0

Resistance ( $\Omega$ / km)	Capacitance Red/White (pF)/m	Capacitance Conductor/Screen (pF/m)	Inductance (uH/m)
12.8	124	198	0.64

## Quality Comparison

### Purity of copper



**Excellent**

99.93% Oxygen Free Copper ,  
Bright color with long life time .



**Inferior**

Copper including a lot of impurity  
Easy heat, short life Easily cause fire

### Flame Test



**Excellent**

No spread , and release a little  
white smoke



**Inferior**

Keep burning , and pop a lot of black  
HCL toxic smoke

### Resistance Test



**Excellent**

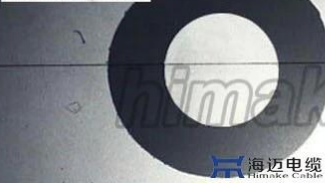
low resistivity, high conductivity



**Inferior**

High resistivity,High consumption .  
Easy to burning .

### Eccentricity Ratio



**Excellent**

Insulation thickness uniformity



**Inferior**

Insulation thickness nonuniform  
Easy electric leakage fire disaster,

### High Pressure Test



**Excellent**

Jacket no any damage



**Inferior**

Jacket damaged , reveal conductor

### High Temperature Test



**Excellent**

Jacket no any damage



**Inferior**

Jacket damaged , reveal conductor

### Low Temperature Test



**Excellent**

Jacket no any damage



**Inferior**

Jacket damaged , reveal conductor

