

## Product Description:

Plain annealed copper conductor, silicone rubber or low smoke zero halogen (LSZH) insulated, aluminum/polyester tape screen, bare tinned annealed copper earth wire or bare annealed copper earth wire, low smoke zero halogen (LSZH) outer sheath. Red, White, Orange or Black. Fire resistant to IEC 331 and BS6387. Flame retardant to BS5839-1:2003 and IEC 60332-3 CAT CWZ, BS7629-1 1997. Acid gas emission to BS EN 50267 (IEC60754), smoke emission to BS EN 50268 (IEC 61034) and flame propagation to BS EN 50265, BS EN 50266 (IEC60332).

## Product characteristics:

Low smoking Halogen free, Fire resistance, UV resistance, RoHS compliant

## Product application:

The British standard alarm cable features a fire resistant soft skin with a low smoke and zero halogen outer sheath. The cable is most often used in fire alarms and emergency lighting.

**Product parameter:** (if more details please email us: [info@himakecable.com](mailto:info@himakecable.com))

Cores and conductor size (mm <sup>2</sup> )	Conductor material	Conductor stranding (mm)	Approx. Weight (kg/km)	Approx. O.D. (mm)
2C×1.0+E	Plain annealed copper	1/1.13	90	7.5
3C×1.0+E	Plain annealed copper	1/1.13	110	8.0
4C×1.0+E	Plain annealed copper	1/1.13	135	8.8
7C×1.0+E	Plain annealed copper	1/1.13	170	10.5
12C×1.0+E	Plain annealed copper	1/1.13	270	13.7
2C×1.5+E	Plain annealed copper	1/1.38	110	8.0
3C×1.5+E	Plain annealed copper	1/1.38	130	8.4
4C×1.5+E	Plain annealed copper	1/1.38	160	9.5
7C×1.5+E	Plain annealed copper	1/1.38	230	11.3
2C×2.5+E	Plain annealed copper	1/1.78	160	9.0
3C×2.5+E	Plain annealed copper	1/1.78	200	10.5
4C×2.5+E	Plain annealed copper	1/1.78	250	11.7
2C×4.0+E	Plain annealed copper	7/0.85	260	11.3
3C×4.0+E	Plain annealed copper	7/0.85	315	12.1
4C×4.0+E	Plain annealed copper	7/0.85	380	13.3







# Quality Comparison

## Purity of copper



**Excellent** 99.93% Oxygen Free Copper ,  
Bright color with long life time .



**Inferior** Copper including a lot of impurity  
Easy heat, short life Easily cause fire

## Flame Test



**Excellent** No spread, and release a little  
white smoke



**Inferior** Keep burning, and pop a lot of black  
HCL toxic smoke

## Resistance Test

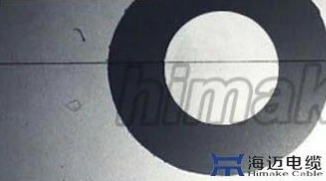


**Excellent** low resistivity, high conductivity



**Inferior** High resistivity, High consumption .  
Easy to burning .

## Eccentricity Ratio



**Excellent** Insulation thickness uniformity



**Inferior** Insulation thickness nonuniform  
Easy electric leakage fire disaster,

## High Pressure Test



**Excellent** Jacket no any damage



**Inferior** Jacket damaged , reveal conductor

## High Temperature Test



**Excellent** Jacket no any damage



**Inferior** Jacket damaged , reveal conductor

## Low Temperature Test



**Excellent** Jacket no any damage



**Inferior** Jacket damaged , reveal conductor

